

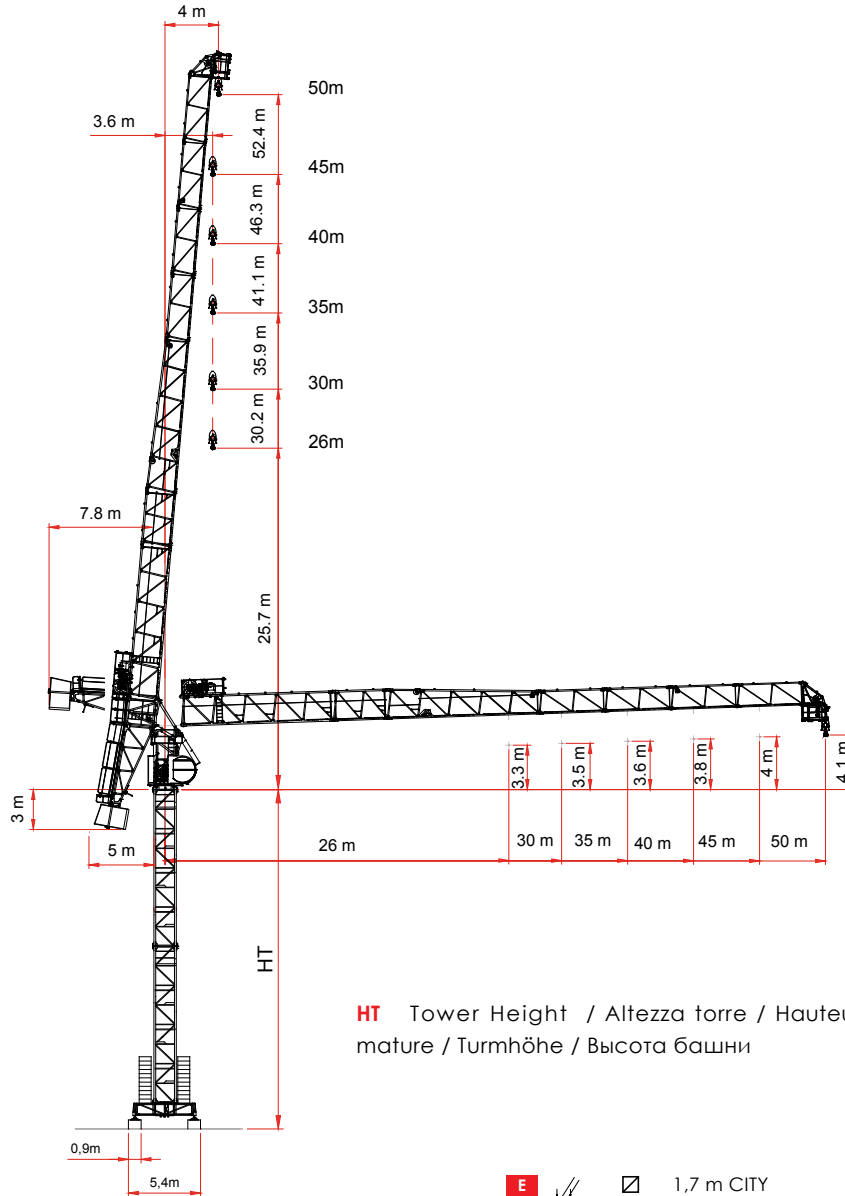
The LRH174 hydraulic luffing crane
erected in Legnano, Milan, Italy,
equipped with the Deluxe R16
Crane Cabin HT 35.7



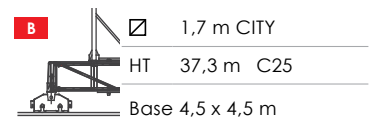
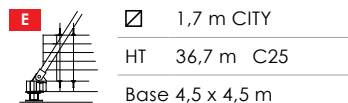
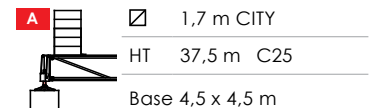
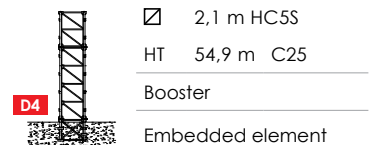
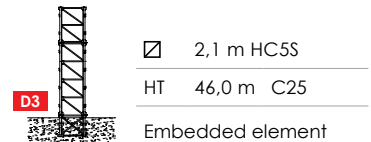
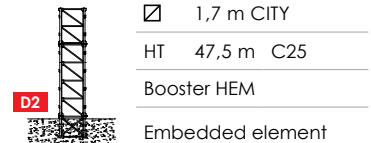
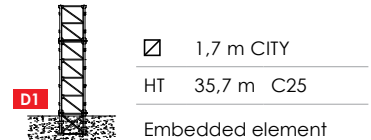
 **RAIMONDI**® LRH174
SINCE 1863

LRH174




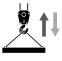












10t



HT Tower Height / Altezza torre / Hauteur mature / Turmhöhe / Высота башни






A4 EN 14439 c25

	IT	EN	F	DE	RU
	Altezza sotto gancio	Height under hook	Hauteur sous crochet	Höhe unter dem Haken	Высота под крюком
	Contrappesi	Counter weight jib ballast	Lest de contre-flèche	Gegenauslegerballast	Противовесы
	Freccia	Jib	Flèche	Kranarm	стрела крана
	Carico massimo	Max load	Charge maximale	Maximale Belastung	максимальная нагрузка
	Curva di carico Ultralift	Load diagrams with ultralift control	Courbes de charges Ultralift	Lastkurven Ultralift	Кривой Груз Ultralift
	Altezza libera	Free Standing	Hauteur libre	Freistehend	Свободностоящая высота
	Azionamenti	Mechanisms	Mécanismes	Antriebe	Приводы
	Velocità	Speed	Vitesse	Geschwindigkeit	скорость
	5 marce con velocità proporzionale al carico	5 step with speed proportional to the load	5 rapports avec une vitesse proportionnelle à la charge	5 Gang Geschwindigkeit proportional zum Last	Автоматический выбор скорости механизма подъема в зависимости от величины груза
	Tiro a 2 funi	Two - rope pull	Tir à deux câbles	Zug an zwei Seilen	Двукратная запасовка тросов
	Tiro a 4 funi	Four - rope pull	Tir à quatre câbles	Zug an vier Seilen	Четырехкратная запасовка тросов
	Totale metri fune tamburo	Total meters rope drum	Total des mètres de corde du tambour	Total Meter Seil Trommel	Запас троса на барабане в метрах
	Diametro fune	Rope diameter	Diamètre du câble	Seildurchmesser	Диаметр троса
	Rotazione	Slewing	Orientation	Schwenken	Поворот
	Braccio impennabile	Luffing jib	Flèche rélevable	Arm mit erhöht	Стрела крана подъемный
	Traslazione	Travelling	Translation	Kranfahren	Перемещение крана

LRH174

10t

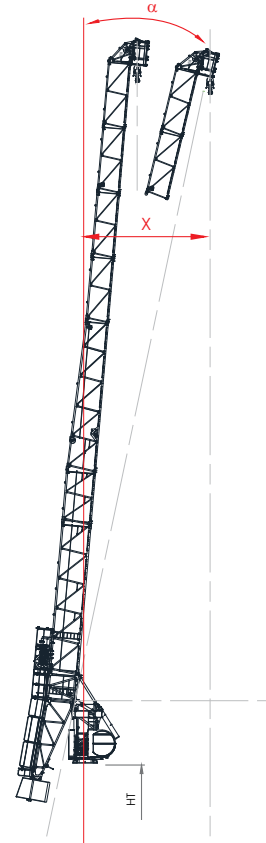
		MAX 	26,0	30,0	35,0	40,0	45,0	50,0
kg	m	10,0 t	Kg					
20 400	50	*	5000	5000	4069	3336	2757	2255
20 400	45	19,0	6967	5821	4745	3926	3245	
20 400	40	20,0	7427	6221	5085	4180		
20 400	35	20,0	7583	6363	5170			
17 000	30	20,5	7710	6435				
17 000	26	21,0	7865					

	26,0 m	30,0 m	35,0 m	40,0 m	45,0 m	50,0 m
x	11,0 m	11,0 m	10,0 m	10,0 m	10,0 m	10,0 m
α	26 °	22,4 °	17,5 °	15,3 °	13,8 °	12,2 °

Out of service radius / angles










For different configuration contact the technical department /
Per configurazioni diverse contattare l'ufficio tecnico / Pour des
configurations différentes contact le département technique.

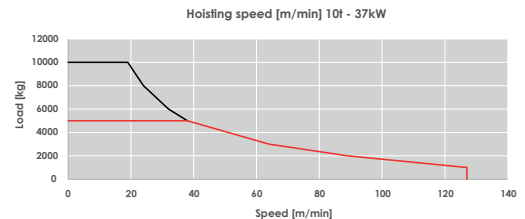


400 V ± 5% 50 Hz



 2000 / 14 / CE

	STEP				
		m/min	kg	m/min	kg
 480 m	1	13	5 000	6,5	10 000
 180 kVA	2	38	5 000	19	10 000
 Ø 16 mm	3	64	3 000	32	6 000
	4	89	2 000	44,5	4 000
	5	127	1 000	63,5	2 000



The speed at which loads are lifted or lowered is automatically regulated by the control system.

kVA Power required / Potenza richiesta / Puissance requise / Erforderliche Leistung / Потребляемая мощность





0 / 0,75 r.p.m. ▪ 2 x 4 kW /



2° / 85° 1,8 min ▪ 22 kW /




19 m/min ▪ 2 x 2,9 kW

		26,0 m	30,0 m	35,0 m	40,0 m	45,0 m	50,0 m	
LRH174 - 5,0t UL	 Freccia							
	Tip load 5t ▶	3,5-26	3,5-30	3,5-35	3,5-36,5	3,6-34,5	3,65-31	
	17,5	5000	5000	5000	5000	5000	5000	
	18	5000	5000	5000	5000	5000	5000	
	18,5	5000	5000	5000	5000	5000	5000	
	19	5000	5000	5000	5000	5000	5000	
	19,5	5000	5000	5000	5000	5000	5000	
	20	5000	5000	5000	5000	5000	5000	
	22,5	5000	5000	5000	5000	5000	5000	
	25	5000	5000	5000	5000	5000	5000	
	26	5000	5000	5000	5000	5000	5000	
	27,5		5000	5000	5000	5000	5000	
	30		5000	5000	5000	5000	5000	
	32,5			5000	5000	5000	4704	
	35			5000	5000	4948	4263	
	37,5				4838	4518	3879	
	40					4400	4139	3541
	42,5					3799	3240	
	45					3465	2970	
	47,5						2724	
50						2475		

ULTRALIFT If the crane is not equipped with Ultralift control, all intermediate loads are decreased by 10% / Senza il sistema Ultralift tutte le portate intermedie diminuiscono il carico del 10%




LRH174 - 10,0t UL

Freccia	26,0 m	30,0 m	35,0 m	40,0 m	45,0 m	50,0 m
Tip load 10t ▶	3,4-21	3,5-20,5	3,5-20	3,5-20	3,5-19	3,65-30
17,5	10000	10000	10000	10000	10000	5000
18	10000	10000	10000	10000	10000	5000
18,5	10000	10000	10000	10000	10000	5000
19	10000	10000	10000	10000	10000	5000
19,5	10000	10000	10000	10000	9784	5000
20	10000	10000	10000	10000	9505	5000
22,5	9335	9124	8986	8818	8289	5000
25	8271	8076	7945	7786	7308	5000
26	7865	7710	7583	7427	6967	5000
27,5		7206	7086	6935	6499	5000
30		6435	6363	6221	5821	5000
32,5			5743	5612	5244	4516
35			5170	5085	4745	4069
37,5				4622	4310	3679
40				4180	3926	3336
42,5					3582	3031
45					3245	2757
47,5						2507
50						2255

ULTRALIFT If the crane is not equipped with Ultralift control, all intermediate loads are decreased by 10% / Senza il sistema Ultralift tutte le portate intermedie diminuiscono il carico del 10%

400 V ± 5% 50 Hz


 2000 / 14 / CE

10 t 60 hp 45 kW

STEP



m/min

kg

m/min

kg

 600 m

1

14

5 000

7

10 000

 200 kVA

2

29

5 000

14,5

10 000

 Ø 16 mm

3

57

5 000

28,5

10 000






114

2 000

57

4 000





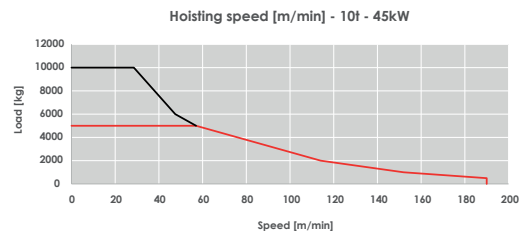

5

190

500

95

1000



Il raggiungimento della velocità è regolato automaticamente dal sistema di controllo.
 The speed at which loads are lifted or lowered is automatically regulated by the control system.

kVA **Power required** / Potenza richiesta / Puissance requise / Erforderliche Leistung / Потребляемая мощность



0 / 0,75 r.p.m. • 2 x 4 kW /

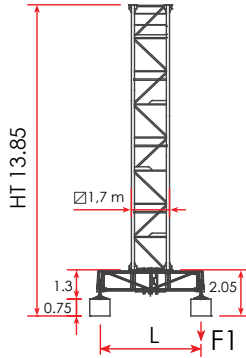


2° / 85° 1,8 min • 22 kW /

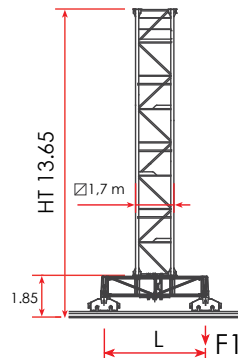


19 m/min • 2 x 2,9 kW

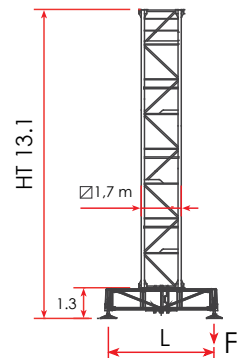
1,7 m L = 4,5 m A



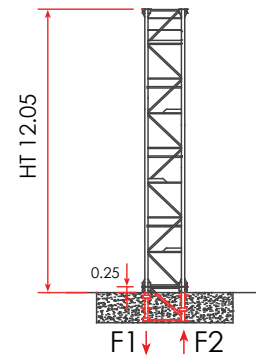
1,7 m L = 4,5 m B



1,7 m L = 4,5 m E



1,7 m / 2,1 m D



A

1,7 m CITY

Base on concrete pads - L 4,5 x 4,5 m - EN14439 C25

El	HT	□	Δ	Jib 50 m		Jib 45 m		Jib 40 m		Jib 35 m		Jib 30 m		Jib 26 m	
				Z (t)	F1↓ (kN)	Z (t)	F1↓ (kN)	Z (t)	F1↓ (kN)	Z (t)	F1↓ (kN)	Z (t)	F1↓ (kN)	Z (t)	F1↓ (kN)
n.	(m)		(m)												
+ 8	37,45	C	2,95											81,6	999
+ 7	34,50	C	2,95						91,8	1055	81,6	957	81,6	919	
+ 6	31,55	C	2,95					81,6	1002	81,6	967	71,4	875	71,4	841
+ 5	28,60	C	2,95			81,6	978	81,6	921	81,6	889	71,4	802	61,2	768
+ 4	25,65	C	2,95	81,6	931	81,6	898	81,6	846	81,6	817	71,4	734	61,2	704
+ 3	22,70	C	2,95	71,4	846	71,4	819	71,4	772	71,4	751	61,2	669	61,2	655
+ 2	19,75	C	2,95	71,4	774	71,4	749	71,4	725	71,4	713	61,2	637	51,0	598
+ 1	16,80	C	2,95	71,4	725	71,4	713	71,4	695	71,4	684	61,2	608	51,0	574
-	13,85	C	2,95	71,4	690	71,4	679	71,4	664	71,4	653	61,2	582	51,0	548

El (n.) Number of tower elements


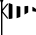










Z (t) Total Ballast


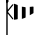










HT (m) Total tower height








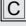

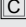


F1↓ Maximum compression

Δ (m) Element height












F2↑ Maximum traction

B		 1,7 m CITY		Travelling base - L 4,5 x 4,5 m -  EN14439 C25											
EI	HT		Δ	Jib 50 m		Jib 45 m		Jib 40 m		Jib 35 m		Jib 30 m		Jib 26 m	
n.	(m)		(m)	Z (t)	FI↓(kN)	Z (t)	FI↓(kN)	Z (t)	FI↓(kN)	Z (t)	FI↓(kN)	Z (t)	FI↓(kN)	Z (t)	FI↓(kN)
+ 8	37,25		2,95											102,0	1005
+ 7	34,30		2,95							112,2	1064	102,0	972	102,0	925
+ 6	31,35		2,95					112,2	1015	102,0	975	91,8	888	91,8	846
+ 5	28,40		2,95			102,0	986	102,0	929	102,0	897	91,8	815	91,8	777
+ 4	25,45		2,95	102,0	927	102,0	906	102,0	854	102,0	824	91,8	746	81,6	708
+ 3	22,50		2,95	91,8	843	91,8	826	91,8	779	91,8	758	81,6	678	81,6	659
+ 2	19,55		2,95	91,8	771	91,8	756	91,8	731	91,8	719	81,6	645	81,6	630
+ 1	16,60		2,95	91,8	727	91,8	719	91,8	701	91,8	690	81,6	616	81,6	605
-	13,65		2,95	91,8	692	91,8	685	91,8	670	91,8	659	81,6	588	81,6	579

E		 1,7 m CITY		Base on steel pads - L 4,5 x 4,5 m -  EN14439 C25											
EI	HT		Δ	Jib 50 m		Jib 45 m		Jib 40 m		Jib 35 m		Jib 30 m		Jib 26 m	
n.	(m)		(m)	Z (t)	FI↓(kN)	Z (t)	FI↓(kN)	Z (t)	FI↓(kN)	Z (t)	FI↓(kN)	Z (t)	FI↓(kN)	Z (t)	FI↓(kN)
+ 8	36,70		2,95											102,0	990
+ 7	33,75		2,95							112,2	1046	102,0	948	102,0	911
+ 6	30,80		2,95					112,2	998	102,0	958	91,8	865	91,8	833
+ 5	27,85		2,95			102,0	968	102,0	912	102,0	881	91,8	793	91,8	764
+ 4	24,90		2,95	102,0	917	102,0	889	102,0	838	102,0	810	91,8	726	81,6	696
+ 3	21,95		2,95	91,8	836	91,8	810	91,8	764	91,8	744	81,6	661	81,6	647
+ 2	19,00		2,95	91,8	765	91,8	741	91,8	717	91,8	706	81,6	629	81,6	618
+ 1	16,05		2,95	91,8	717	91,8	705	91,8	688	91,8	676	81,6	601	81,6	594
-	13,10		2,95	91,8	683	91,8	672	91,8	656	91,8	647	81,6	577	81,6	568

D1		 1,7 m CITY		Crane on embedded element -  EN14439 C25											
El	HT		Δ	Jib 50 m		Jib 45 m		Jib 40 m		Jib 35 m		Jib 30 m		Jib 26 m	
n.	(m)		(m)	F1↓(kN)	F2↑(kN)	F1↓(kN)	F2↑(kN)	F1↓(kN)	F2↑(kN)	F1↓(kN)	F2↑(kN)	F1↓(kN)	F2↑(kN)	F1↓(kN)	F2↑(kN)
+ 8	35,65		2,95											1478	1222
+ 7	32,70		2,95							1457	1185	1310	1060	1363	1114
+ 6	29,75		2,95					1381	1109	1342	1077	1202	959	1255	1013
+ 5	26,80		2,95			1336	1069	1269	1005	1235	976	1102	866	1155	920
+ 4	23,85		2,95	1364	1095	1234	972	1165	905	1144	890	1018	787	1063	834
+ 3	20,90		2,95	1262	997	1131	876	1071	818	1052	805	932	707	986	762
+ 2	17,95		2,95	1158	900	1042	792	991	742	974	731	860	640	907	689
+ 1	15,00		2,95	1067	814	953	709	910	668	896	659	787	573	841	628
-	12,05		2,95	977	730	803	571	773	542	766	541	666	464	774	567

BOOSTER HEM 1,70 m CITY

D2		 1,7 m CITY		Crane on embedded element - Booster HEM -  EN14439 C25											
El	HT		Δ	Jib 50 m		Jib 45 m		Jib 40 m		Jib 35 m		Jib 30 m		Jib 26 m	
n.	(m)		(m)	F1↓(kN)	F2↑(kN)	F1↓(kN)	F2↑(kN)	F1↓(kN)	F2↑(kN)	F1↓(kN)	F2↑(kN)	F1↓(kN)	F2↑(kN)	F1↓(kN)	F2↑(kN)
+ 12	47,45		2,95									2121	1838	2046	1763
+ 11	44,50		2,95							2083	1784	1857	1580	1868	1591
+ 10	41,55		2,95					2250	1951	1887	1593	1691	1421	1726	1456
+ 9	38,60		2,95			2049	1754	1971	1679	1739	1452				
+ 8	35,65		2,95	2352	2048	1783	1495	1731	1446	1601	1321				
+ 7	32,70		2,95	1882	1592	1600	1319	1517	1238						
+ 6	29,75		2,95	1654	1370	737	522								
+ 5	26,80		2,95	729	511										

D3 2,1 m HC5S

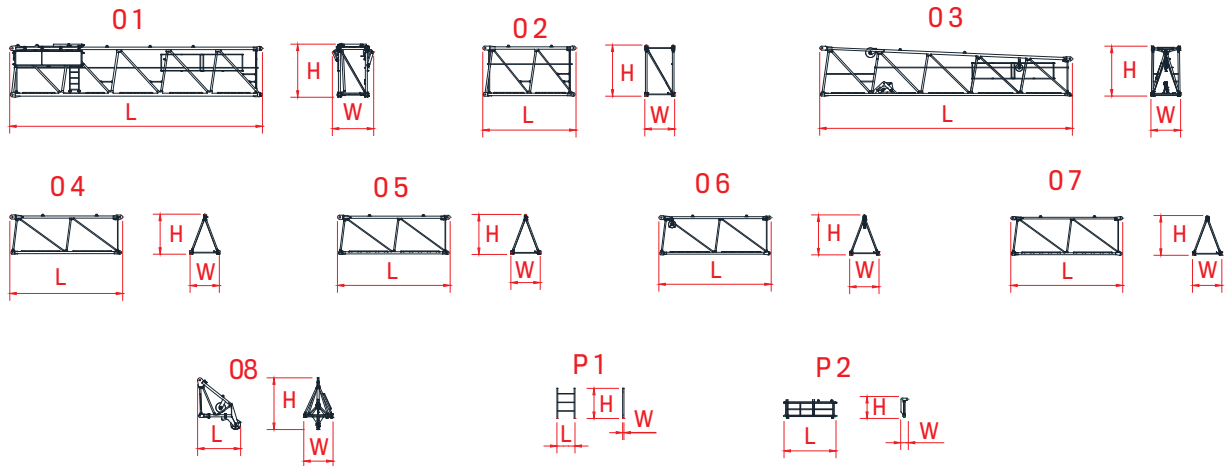
Crane on embedded element - EN14439 C25

EI	HT	<input checked="" type="checkbox"/>	Δ	Jib 50 m		Jib 45 m		Jib 40 m		Jib 35 m		Jib 30 m		Jib 26 m	
				F1↓(kN)	F2↑(kN)	F1↓(kN)	F2↑(kN)	F1↓(kN)	F2↑(kN)	F1↓(kN)	F2↑(kN)	F1↓(kN)	F2↑(kN)	F1↓(kN)	F2↑(kN)
n.	(m)		(m)												
8	46,0	<input type="checkbox"/>	2,95									-1833	1526	-1611	1311
7	43,1	<input type="checkbox"/>	2,95							-1785	1464	-1638	1340	-1427	1136
6	40,1	<input type="checkbox"/>	2,95					-1748	1429	-1592	1279	-1456	1165	-1255	972
5	37,2	<input type="checkbox"/>	2,95	-1887	1571	-1757	1444	-1560	1248	-1411	1106	-1285	1002	-1094	819
4	34,2	<input type="checkbox"/>	5,9	-1692	1384	-1568	1263	-1382	1079	-1241	944	-1124	850	-944	676
3	28,3	<input type="checkbox"/>	5,9	-1336	1045	-1240	951	-1180	893	-934	653	-835	577	-747	447
2	22,4	<input type="checkbox"/>	5,9	-1092	812	-1061	783	-1012	736	-733	414	-750	454	-684	396
1	16,5	<input type="checkbox"/>	5,9	-925	661	-899	638	-860	601	-670	367	-690	410	-630	357

BOOSTER - 2,10 m HC5S
D4 2,1 m HC5S-B

Crane on embedded element - Booster EN14439 C25

EI	HT	<input checked="" type="checkbox"/>	Δ	Jib 50 m		Jib 45 m		Jib 40 m		Jib 35 m		Jib 30 m		Jib 26 m	
				F1↓(kN)	F2↑(kN)	F1↓(kN)	F2↑(kN)	F1↓(kN)	F2↑(kN)	F1↓(kN)	F2↑(kN)	F1↓(kN)	F2↑(kN)	F1↓(kN)	F2↑(kN)
n.	(m)	(m)	(m)												
11	54,9	<input type="checkbox"/>	2,95									-2497	2170	-2240	1920
10	51,9	<input type="checkbox"/>	2,95							-2444	2103	-2263	1945	-2018	1707
9	49	<input type="checkbox"/>	2,95					-2393	2054	-2212	1879	-2043	1733	-1810	1506
8	46	<input type="checkbox"/>	2,95	-2554	2219	-2404	2071	-2166	1835	-1993	1668				
7	43,1	<input type="checkbox"/>	2,95	-2321	1993	-2177	1852	-1952	1629						
6	40	<input type="checkbox"/>		-2100	1781	-1963	1647								



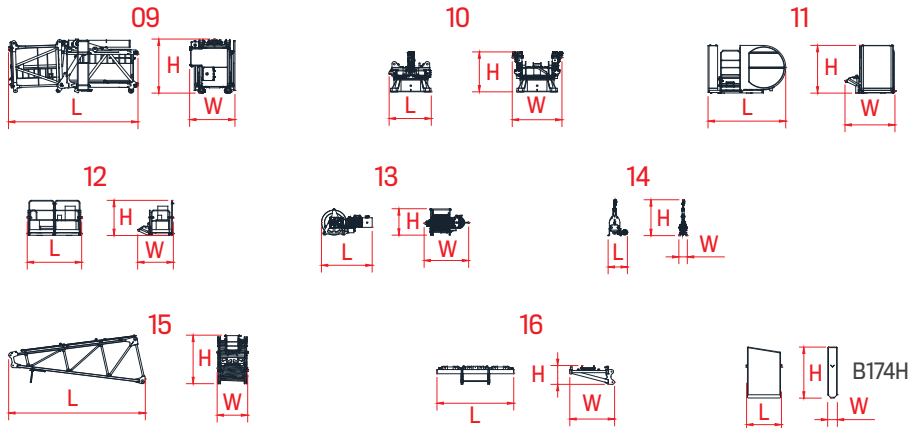
Jib elements LRH174

DIMENSIONS [m]

UNIT WEIGHT

UNIT	POS.	QUANTITY	L	W	H	Kg
Jib element*	01	1	11 738	1 918	2 463	2 845
Jib element	02	1	4 328	1 385	2 374	723
Jib element*	03	1	11 733	1 378	2 315	1 805
Jib element	04	1	5 239	1 362	1 858	483
Jib element	05	1	5 234	1 362	1 858	402
Jib element	06	1	5 214	1 363	1 851	368
Jib element	07	1	5 199	1 363	1 845	300
Tip	08	1	2 000	1 362	2 398	
Tip uprights	P1	1	840	60	1 400	420
tip platform service	P2	1	1 951	263	701	

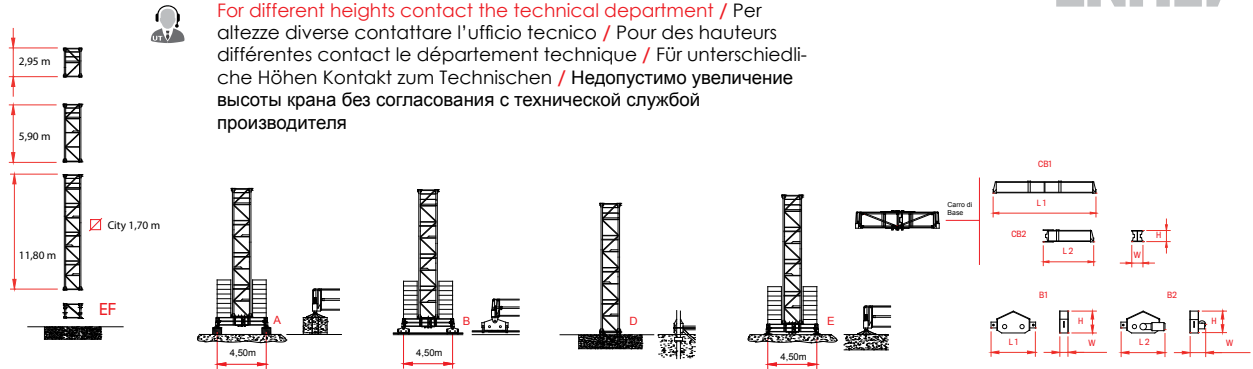
* With platform and accessories



List of packages at the top

UNIT	POS.	QUANTITY	DIMENSIONS [m]			UNIT WEIGHT
			L	W	H	Kg
Tilting group and cylinder	09	1	6 074	2 128	2 541	7 000
Swivel group	10	1	1 977	2 331	1 876	4 100
Balcony + cabin	11	1	3 644	2 341	2 245	1 650
Balcony + control unit	12	1	2 552	1 675	1 657	1 050
Hoisting winch + rope 45 kW	13	1	2 376	2 090	1 243	2 930
Hoisting winch 37 kW		1	2 380	2 090	2 550	2 550
Hook block	14	1	905	400	1 688	420
Initial counterjib element*	15	1	6 408	1 430	2 281	1 345
Counterweight frame	16	1	3 600	2 100	883	780

* With platform and accessories



For different heights contact the technical department / Per altezze diverse contattare l'ufficio tecnico / Pour des hauteurs différentes contact le département technique / Für unterschiedliche Höhen Kontakt zum Technischen / Недопустимо увеличение высоты крана без согласования с технической службой производителя

Tower 1,7 m CITY

DIMENSIONS [m]

UNIT WEIGHT

UNIT	POS.	QUANTITY	L	W	H	Kg
Tower el. 2,95 - City 1,70 m	-	1	1 900	1 700	1 400	-
Tower el. 5,90 - City 1,70 m	-	1	1 900	1 700	2 295	-
Tower el. 11,80 - City 1,70 m	-	1	1 900	1 700	4 175	-
Foundation element City	EF	1	1 465	1 980	1 980	830
Foundation element HEM120	EF	1	1 986	1 986	1 625	1 095
Crossbase long beam	CB1	1	6 530	0 780	0 960	2 595
Crossbase short beam	CB2	2	3 212	0 680	0 974	1 235
Driving bogie	B1	1	1 320	0 230	0 540	600
Driven bogie	B2	1	1 430	0 500	0 540	765
B5 - Block - 1,70 m CITY		1	3,6	0,9	0,75	5 520
GB5F - Base ballast		1	4 300	1 200	0 430	5 100
B174 - Counterweight block		1	1 670	440	2 395	3 400



5 x 13,60 m

LRH174 _Jib 50 m •

Top part / Parte rotante / Partie tournante / Drehender Kranteil / Поворотная часть



1 x 40 OT

4 x 40 HC

1 x 20 Box

Included counter weight and cabin / Cabina e contrappesi inclusi / Cabine et contrepoids inclus / Kabine und Gegengewichts Blöcke – inbegriffen / Противовес включен - кабина



www.raimondi.co



Raimondi Cranes is proudly headquartered in our ancestral home of Legnano

Corso Garibaldi, 253 - 20025 Legnano - Milan, Italy

T +39 0331 548 061 r.a. | +39 0331 545 308 r.a. | F +39 0331 450 400 | info@raimondicranes.com

DATA SHEETS REV.00.2019 / ADL



The data presented in the 2019 Product Guide is subject to change without prior notice. Being a non-binding commercial document, the reader is required to consult instruction manuals for all technical information. / I dati oggetto della presente scheda potrebbero subire

modifiche senza preavviso. Essendo un documento commerciale non vincolante si fa obbligo di consultare il manuale di istruzioni per tutte le informazioni tecniche. / Les informations données dans les fiches présentes peuvent subir des modifications sans préavis. Étant un document commercial non contraignant, il est nécessaire de consulter le manuel d'instructions pour toutes les informations techniques. / Die daten der vorliegenden blätter könnten ohne vorankündigung geändert werden. Unverbindliches Vertriebsdokument. Für technische Informationen, siehe die entsprechenden Anweisungen. / данные, указанные в настоящих спецификациях, могут изменяться без предварительного предупреждения. Этот коммерческий документ не является юридически обязательным. Для получения технической информации, см. соответствующие инструкции.