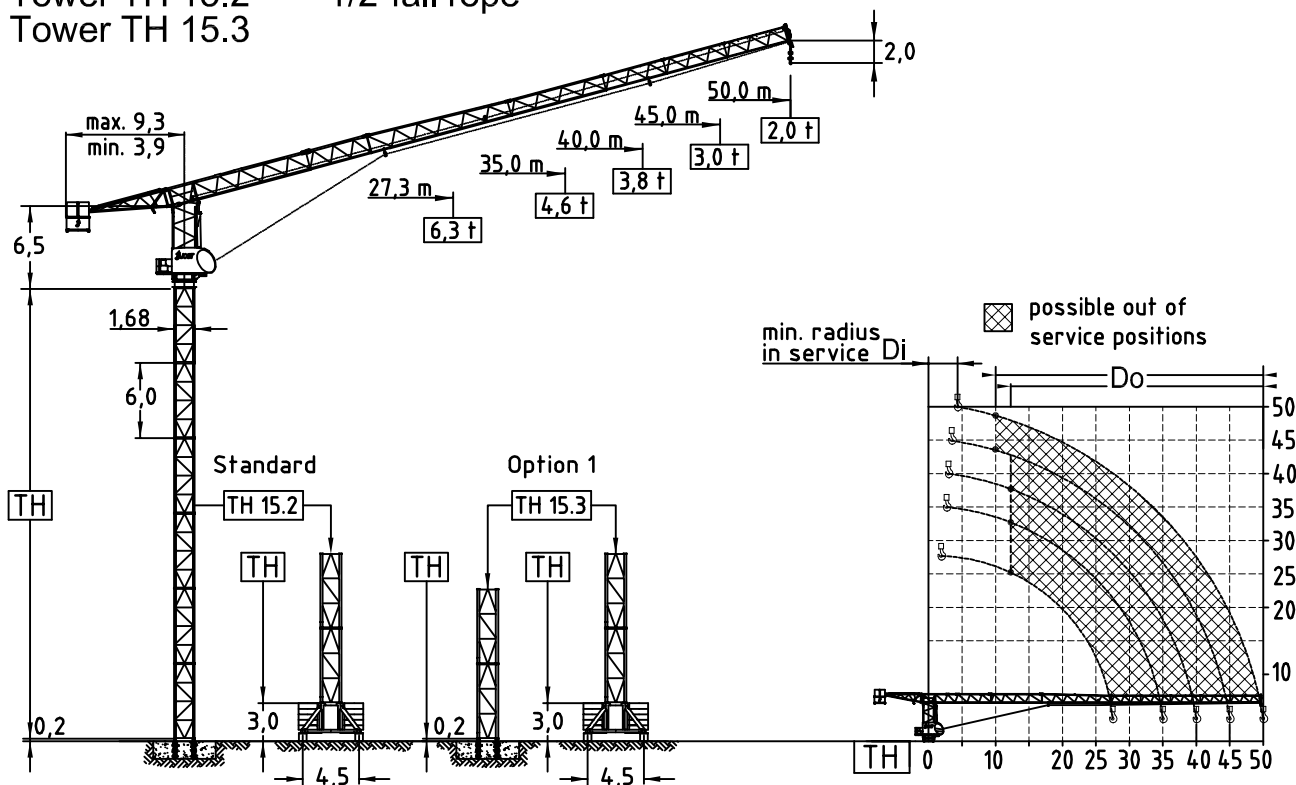


# JTL 168.8 - 8,0 ton

Tower TH 15.2 1/2-fall rope  
Tower TH 15.3

Topless  
Luffing crane



Jib (m)		Jib radius (m)		Tower heights all data in (m)			
				Standard Tower		Option 1	
				Foundat.	Chassis	Foundat.	Chassis
		Di	Do	TH 15.2	UC 4,5-15.2	TH 15.3	UC 4,5-15.3
27,3		2,2	12,0	39,0	39,0	51,0	39,0
35,0		2,8	12,0	36,0	33,0	48,0	33,0
40,0		3,2	12,0	33,0	30,0	45,0	30,0
45,0		3,6	10,0	30,0	27,0	42,0	27,0
50,0		4,1	10,0	27,0	24,0	39,0	24,0

Hoist 37,0 kW FI							
φ	t	0,9	1,1	2,0	3,0	3,5	4,0
	m/min	160	148	112	80	72	42
⊘	t	1,8	2,2	4,0	6,0	7,0	8,0
	m/min	80	74	56	40	36	21
Hook height	1-fall	480,0 m					
	2-fall	240,0 m					

Hoist 45,0 kW FI							
φ	t	1,0	1,2	2,0	3,8	3,9	4,0
	m/min	188	172	138	88	68	50
⊘	t	2,0	2,4	4,0	7,6	7,8	8,0
	m/min	94	86	69	44	34	25
Hook height	1-fall	560,0 m					
	2-fall	280,0 m					

Radius & Capacity											
Jib		max. Load		Jib radius							
m	rope	t	m	22	25	27,3	30	35	40	45	50
50,0	⊘	4,0	25,9	4,00	4,00	3,79	3,43	2,92	2,54	2,24	2,00
		-	-	-	-	-	-	-	-	-	-
45,0	⊘	4,0	34,2	4,00	4,00	4,00	4,00	3,90	3,39	3,00	
		8,0	17,3	6,25	5,46	4,97	4,50	3,81	3,30	2,90	
40,0	⊘	4,0	38,1	4,00	4,00	4,00	4,00	4,00	3,80		
		8,0	19,3	6,97	6,10	5,56	5,03	4,27	3,70		
35,0	⊘	4,0	35,0	4,00	4,00	4,00	4,00	4,00			
		8,0	20,7	7,05	6,65	5,98	5,42	4,60			
27,3	⊘	4,0	27,3	4,00	4,00	4,00					
		8,0	21,7	7,89	6,91	6,30					

Power requirement	
400V (±10%) - 50Hz	

Shipping		
	Truck	Cont.
Top crane	5	6
Tower 2 units	1	1
Climbing	1	1
Chassis	1	1

Motor	15,0 kW FI	1 x 4,4 kW FI	2 x 5,0 kW
t/v	2,0 min	0,77 rpm	25,0 m/min
Power requirement Upper part	Hoist 37,0 kW		85 kVA
	Hoist 45,0 kW		100 kVA
Counter weight		Ropes	
Block 1	3 x 5,5 t	D (mm)	N/mm <sup>2</sup>
Block 2	3 x 1,7 t	Hoist	16,0 1960
Block 3	-		
Total	21,6 t		



EN 14439  
WIND C 25

JOST Cranes GmbH & Co. KG  
Schmiedweg 3  
85604 Zorneding  
Germany  
Fon +49-8106 9995580  
Fax +49-8106 9995582  
Mail info@jostcranes.de  
Web www.jostcranes.de